



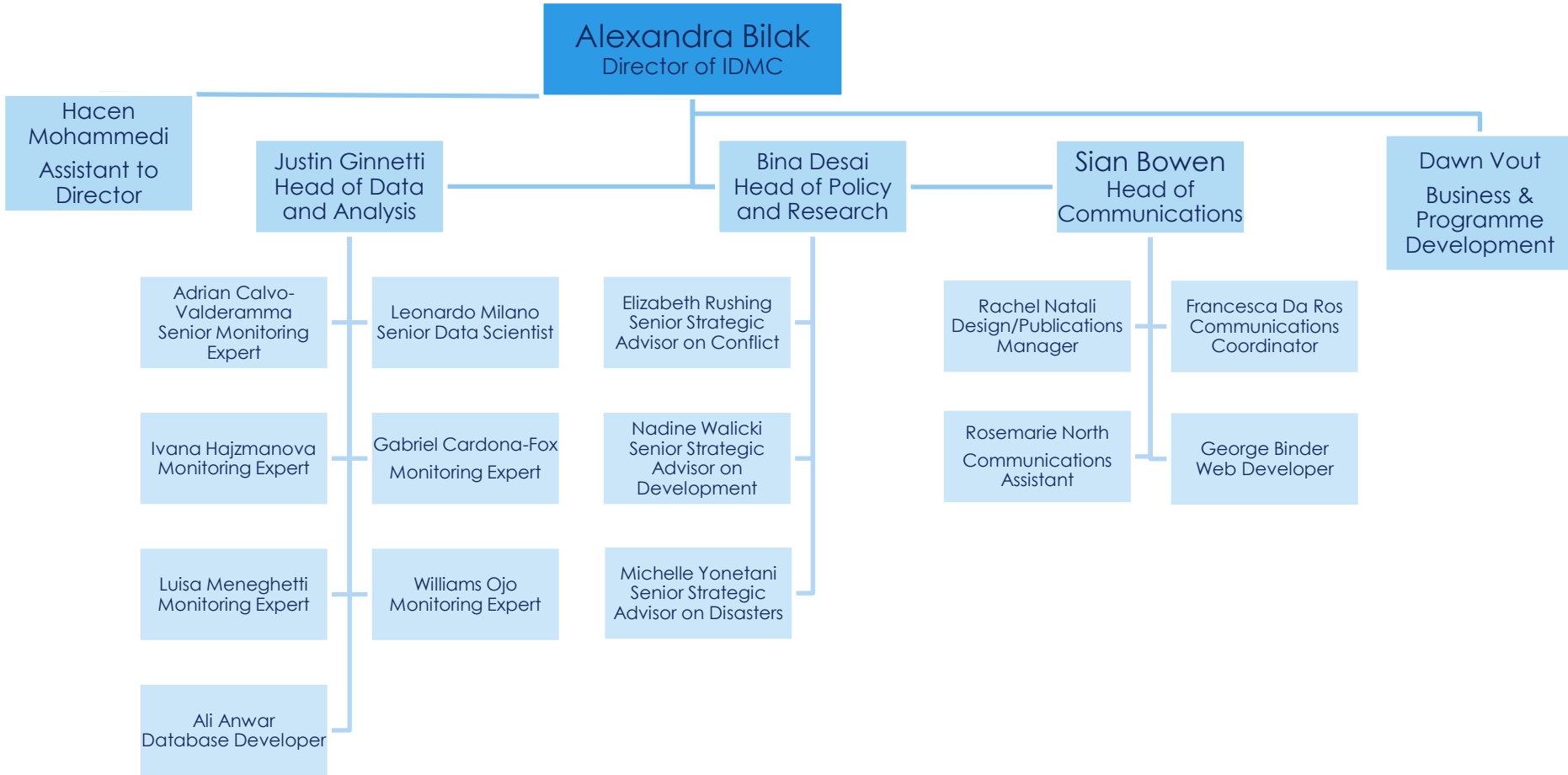
NORWEGIAN
REFUGEE COUNCIL

iDMC internal
displacement
monitoring
centre

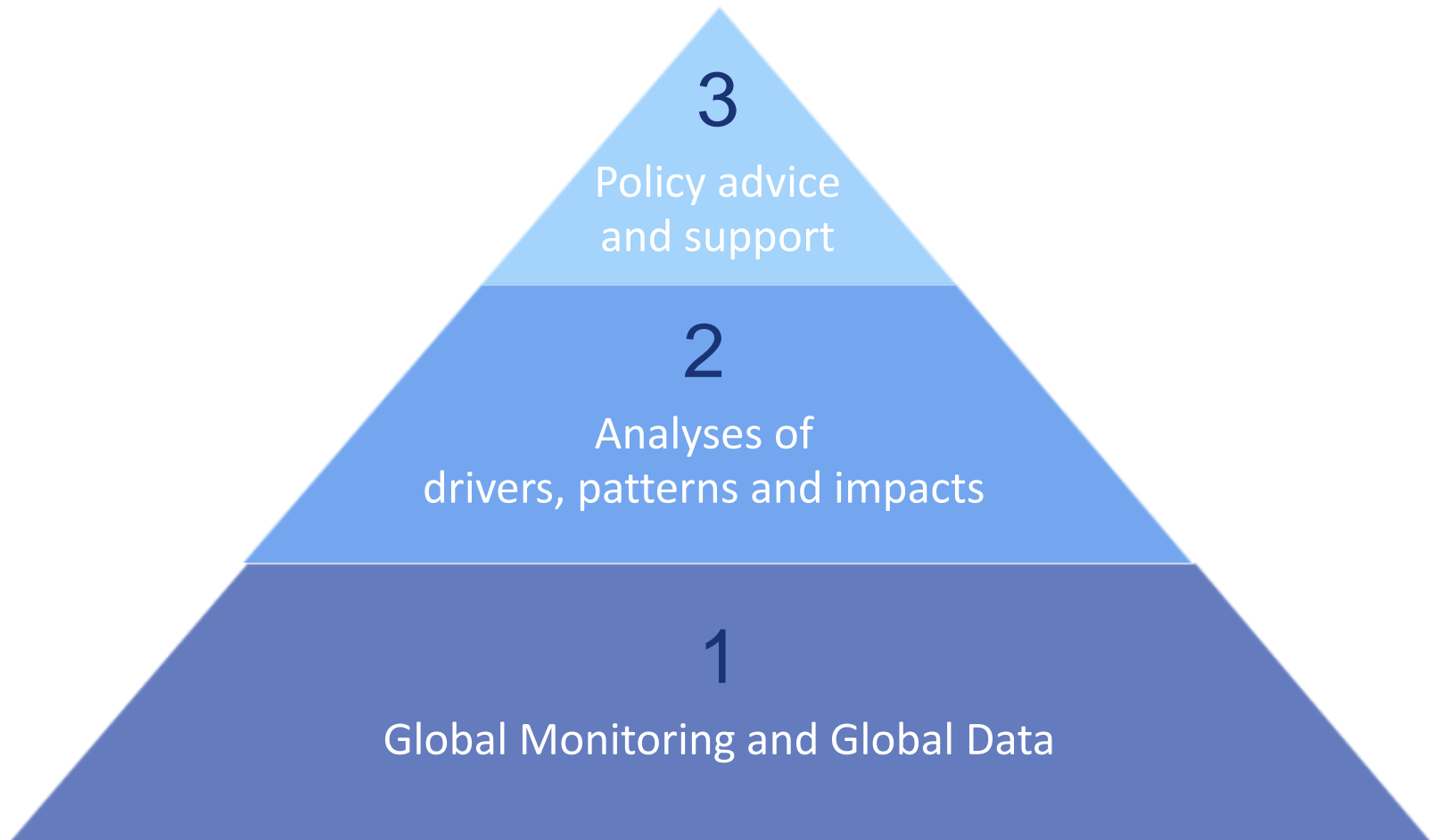


IAIA Symposium on Resettlement and Livelihoods
Manila, 22 February 2017

IDMC Team



IDMC Pillars of work



2015: UN General Assembly Resolution on IDPs

United Nations

A/RES/70/165



General Assembly

Distr.: General
22 February 2016

Seventieth session
Agenda item 72 (b)

Resolution adopted by the General Assembly on 17 December 2015

[on the report of the Third Committee (A/70/489/Add.2)]

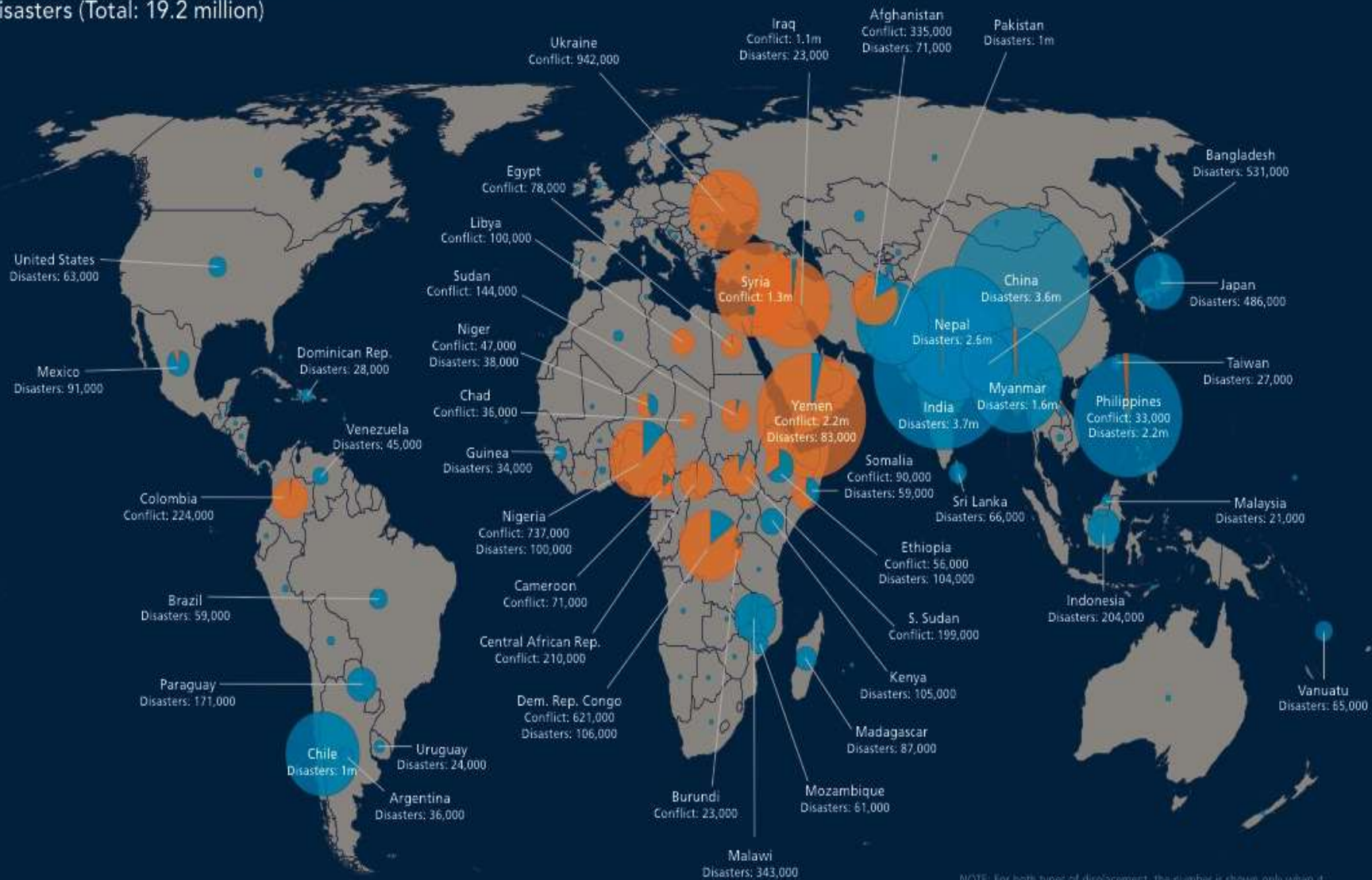
70/165. Protection of and assistance to internally displaced persons

34. *Encourages* Governments, members of the Inter-Agency Standing Committee, United Nations humanitarian coordinators and country teams to ensure the **provision of reliable data on internal displacement situations** by collaborating with the **Internal Displacement Monitoring Centre** . . .

New displacements associated with conflict and disasters in 2015

Conflict and violence (Total: 8.6 million)

Disasters (Total: 19.2 million)



NOTE: For both types of displacement, the number is shown only when it exceeds 20,000. The size of the pie charts is fixed for estimates of 5,000 or less. In a few cases, the same person may be displaced more than once.

Global data on internal displacement

2015	New displacements	Total number of IDPs
CONFLICT & VIOLENCE	8.6 million	40.8 million
SUDDEN-ONSET DISASTERS	19.2 million	?
DEVELOPMENT PROJECTS	?	?

Why do we need this?

Scale: No current, comprehensive global estimate of the number of people displaced or resettled by development projects.

Severity: No evidence on whether and how the impacts are undermining global development.

IDMC Global Internal Displacement Database

<http://www.internal-displacement.org/database/>



- About us
- Global Report
- IDP Database
- Publications
- Blog
- Media Centre
- Events
- Internal Displacement Updates

IDMC's Global Internal Displacement Database

- The database
- About the database
- Methodology



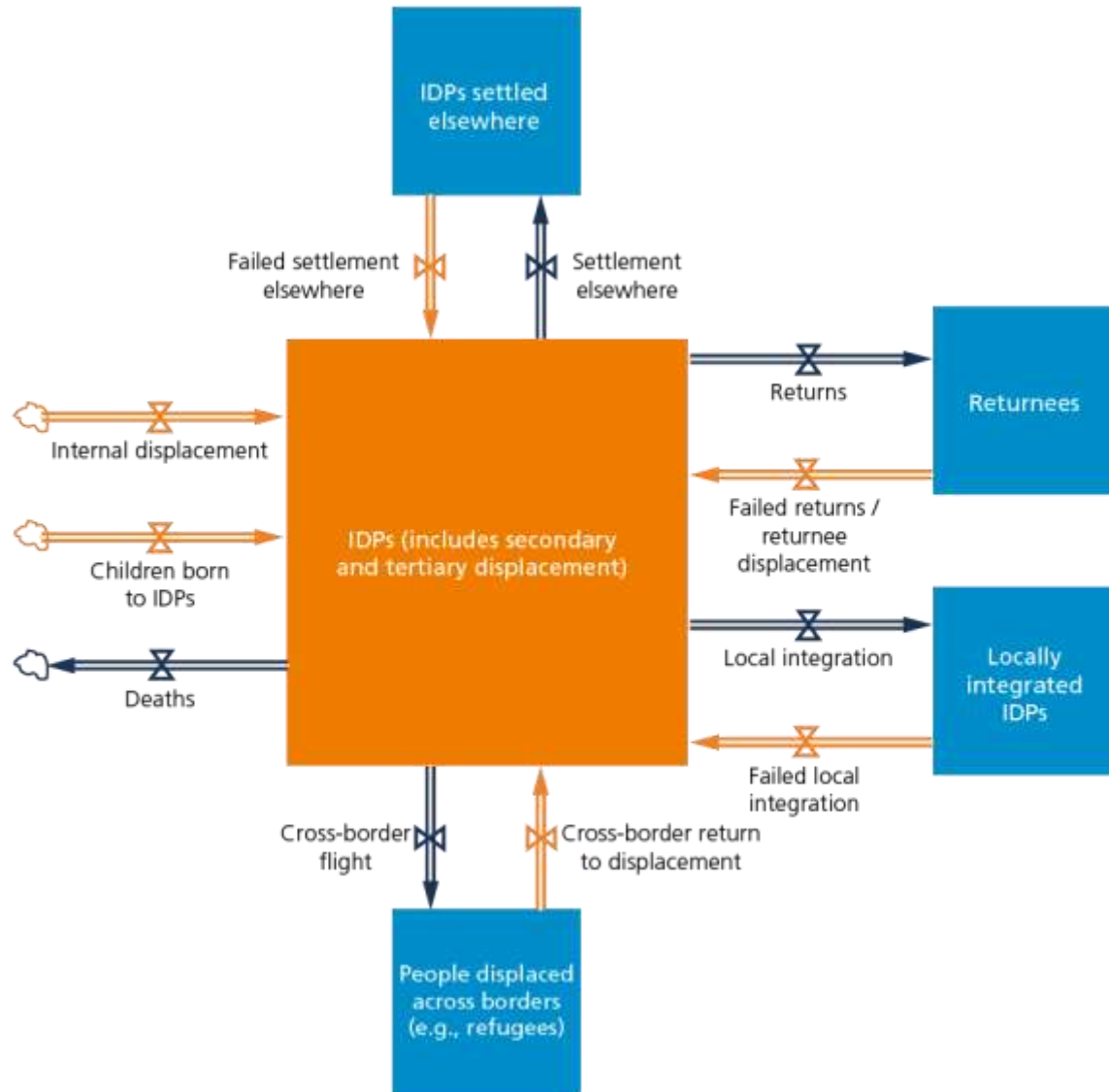
Select a location in the drop-down list or click on the map to view detailed information.

New and total internal displacement by conflict and violence - provisional estimates 2016

Search:

Country	New displacement (conflict)	Total displacement (conflict)	As of	Source
Syrian Arab Republic	900,000	6,100,000	August	OCHA
Yemen, Rep.	478,000	2,205,000	June	Task Force on Population Movement
Turkey	355,000	1,300,000	March	The Guardian
Congo, Dem. Rep.	292,000	1,700,000	June	OCHA
Afghanistan	260,000	1,475,000	August	OCHA

Data on internal displacement



Seeking your expert advice

1. How can we compile a global estimate of the number of people displaced and resettled by development projects?
2. How can we compile the actual human, political, economic and social impacts of displacement caused by development?

Question 1 - Global estimate

How can we compile a global estimate of the number of people displaced and resettled by development projects?

Top-down approach

- Top 10 countries
- Top 10 projects
- Top 10 project type
- Top 10 data available

Where should we start?

What are some non-traditional methods to get the data?

Question 2 - Global impacts

How can we compile the actual human, political, economic and social impacts of displacement and resettlement caused by development?

Top-down approach

- 1 country per region
 - Projects with most severe impacts
 - Good documentation and time-series data
 - Meta-analysis of impacts

Where should we start?

What should the methodology be?

Call for input and cooperation

Nadine Walicki

Email: nadine.walicki@idmc.ch

Twitter: [@NWalicki](https://twitter.com/NWalicki)

www.internal-displacement.org